

## Rotary Feeder with Magnet

### Rotary Feeder with Magnet



Rotary Feeder in operational position



Rotary Feeder with magnet shown in cleaning position

#### **APPLICATION AND OPERATION:**

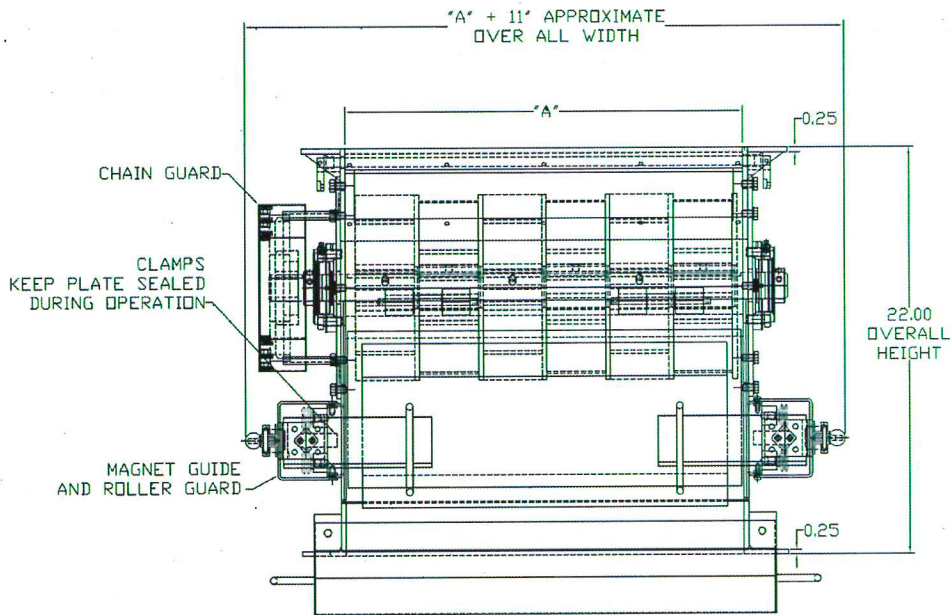
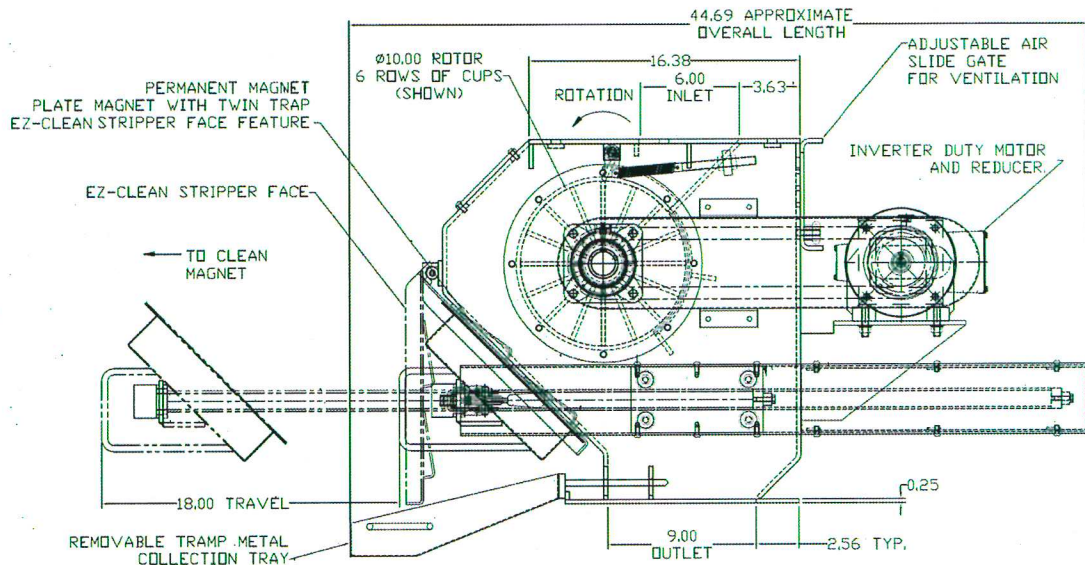
Rotary Feeders are designed to meter the flow of product into processing equipment. As product is fed into the rotor cups, or pockets, the product will be evenly distributed as it exits the feeder. A spring loaded gate on the inlet insures large pieces will not jam and bind the rotor. The powerful Plate Magnet provides magnetic protection to prevent tramp metal from being introduced to the next piece of process equipment to ensure product purity and equipment protection. The Plate Magnet is easily cleaned when retracted from the housing. The Plate Magnet separates from a stripper plate allowing collected tramp metal to be safely discarded into the removable collection tray.

#### **CONSTRUCTION:**

- Heavy duty mild steel weld construction
- Highest available grades of magnetic material with choices including Neodymium-Iron-Boron (rare earth), Samarium-Cobalt (rare earth), Ceramic, and Alnico
- FDA approved white silicone sponge food grade gasket material
- Heavy duty latches
- EZ CLEAN feature for simplified cleaning of the magnet
- 230/460 volt 3ph 60 hz motors

#### **OPTIONS:**

- POW-R CLEAN pneumatically assisted cleaning
- Stainless steel and other alloy construction
- Flanged inlet and outlets to match existing flange patterns
- Custom sizes
- Variable Frequency Drives for adjustable feed rates
- Special voltage requirements



EZ CLEAN MODEL NO.	POWR CLEAN MODEL NO.	10" DIA. CUP	INLET OPENING A	INVERTER DUTY MOTOR
RF1006CPMD22REZ	RF1006CPMD22RPQWR	6 ROWS	21.5"	1HP
RF1009CPMD32REZ	RF1009CPMD32RPQWR	9 ROWS	31.62"	1HP
RF1012CPMD42REZ	RF1012CPMD42RPQWR	12 ROWS	42.12"	2HP
RF1014CPMD50REZ	RF1014CPMD50RPQWR	14 ROWS	49.12"	2HP
RF1018CPMD64REZ	RF1018CPMD64RPQWR	18 ROWS	63.12"	3HP

NOTE: ADDITIONAL SIZE UNITS AVAILABLE. INLET AND OUTLET FLANGES AVAILABLE TO MATCH EXISTING EQUIPMENT.

For technical assistance or to order

**1-800-SUREMAG**



900 S. Glaspie St.  
Oxford, MI 48371  
Ph: 248-628-3808  
Fax: 248-628-3844

www.puritanmagnetics.com  
Email: magnet@puritanmagnetics.com

**Solutions To Your Magnetic Needs**



©2011 Puritan Magnetics